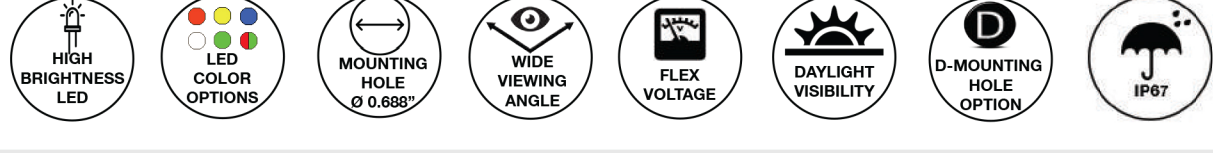


PML50 Series  
0.688” (17.5mm) Low Profile LED  
FlexVolt™ Panel Mount Indicator



PML50 Series with built-in LED FlexVolt™ technology offers daytime visibility, easy installation in harsh environments



Applications

- Industrial
- Transportation
- People Movers
- Automation and Control
- Maritime, Oil and Gas Industry
- Safety and Emergency Applications
- Slot, Gaming and Vending Machines
- Outdoor Applications

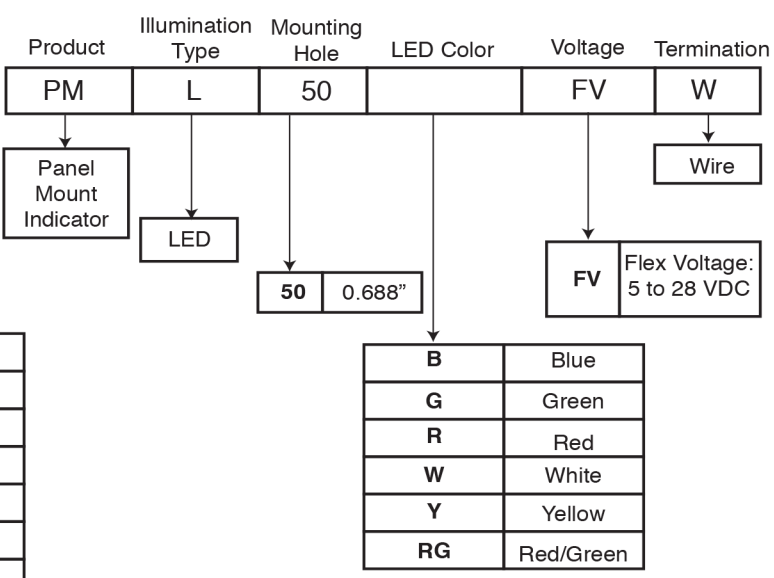
Key Features

- For panel hole diameter: 0.688" (17.5mm)
- Low profile semi dome lenses for uniform illumination
- Mounting hardware provided: lock washer and hex nut.
- Clear transparent lenses and high brightness LEDs produce daylight and outdoor visibility.
- Designed for extreme harsh and outdoor environments.
- Available in five solid colors (red, green, white, blue and yellow) and one bicolor (red/green).
- Resistant to shock and vibration.
- Flex voltage (5 VDC to 28 VDC) designed for application flexibility: one solution for several required input voltages.
- Wide viewing angle.
- Maximum installation torque: 15in/lb.
- D mounting hole to prevent rotation.
- IP67 protection rating protect panels against entry of dust and moisture.
- Long lifetime, up to 100k hours
- Retrofit solution: save energy and reduce costs.
- Please contact us for modified standard options (e.g. quick connection, wire length).
- RoHS and REACH Compliant.

1

Ordering Data

The PML50 Series is available in a range of standard features and options. To specify your Panel Mount Indicator, select one option from each column.

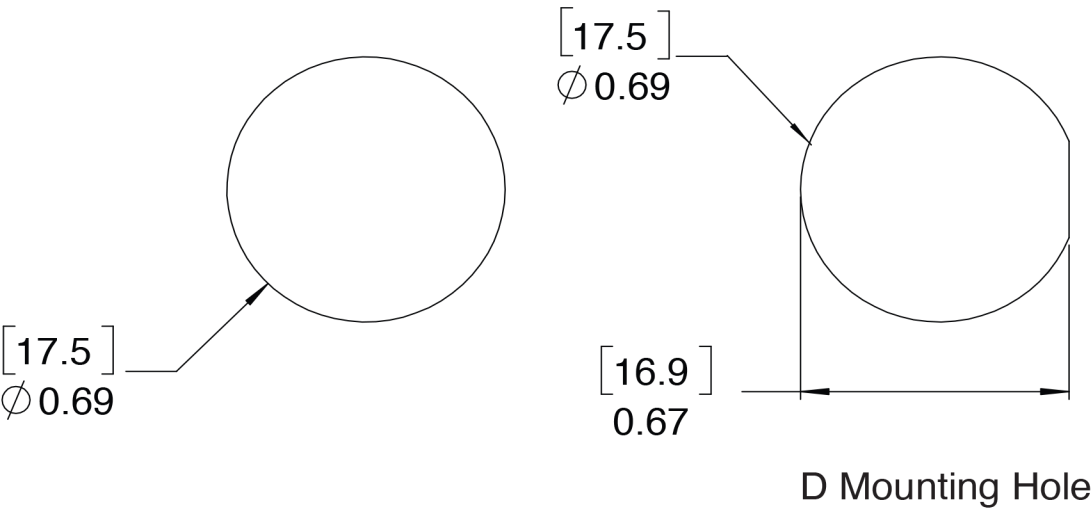


Part Numbers	Color
PML50RFVW	Red
PML50WFVW	White
PML50GFVW	Green
PML50BFVW	Blue
PML50YFVW	Yellow
PML50RGFVW	Red/Green

B	Blue
G	Green
R	Red
W	White
Y	Yellow
RG	Red/Green

Product Dimensions

Recommended Mounting Hole

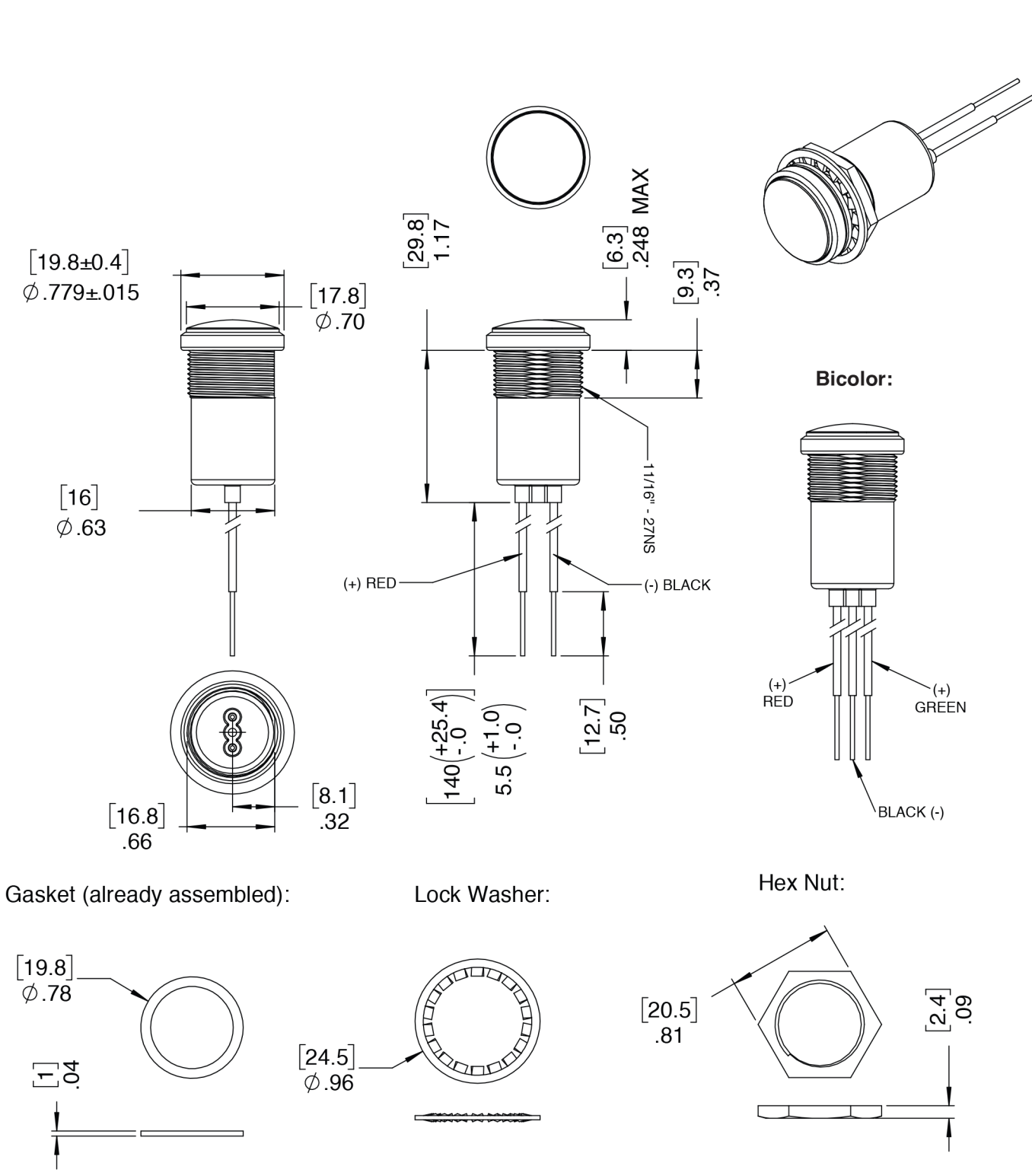


Notes:

- All dimensions are in [millimeters] inches.
- Tolerance is ±[0.25] 0.01 unless otherwise noted.
- The specifications, characteristics and technical data described in the datasheet are subject to change without prior notice.

2

Product Dimensions



Notes:

- All dimensions are in [millimeters] inches.
- Tolerance is ±[0.25] 0.01 unless otherwise noted.
- The specifications, characteristics and technical data described in the datasheet are subject to change without prior notice.

3

Product Specifications

Materials		Installation Specifications	
Housing	White Polycarbonate UL 94 V-0	Mounting Hole ("D" Shape)	11/16" or 0.688" (17.46 mm)
Lens	Transparent Polycarbonate UL94 V-0	Panel Thickness (max.)	0.156" (3.96 mm)
Bezel	Plated, Black Color Finish	Wire Leads	24 AWG - UL1430 rated, 5.5" (140 mm) long, stripped .5" <b>Anode (+):</b> Red lead (Single Color) and Green and Red leads (Bicolor)
Wire Leads	Tinned Copper Conductor PVC Insulation	Mounting Torque	15 in-lbs (17.28 kg-cm)
Washer (installed)	EPDM rubber	<b>Temperature Specifications</b>	
Lock Washer	SPCC, Nickel Plated		
Hex Nut	Brass, Nickel Plated	Operating Temperature	-25°C to +80°C -13°F to +176°F
<b>Electrical Specifications</b>		Storage Temperature	-30°C to +100°C -22°F to +212°F
		<b>Optical Ratings*</b>	
Operating Voltage	5 VDC to 28 VDC (flex voltage)	Part Number	Color
Operating Current	20mA (max.)	PML50RFVW	Red
		PML50YFVW	Yellow
		PML50WFVW	White
		PML50GFVW	Green
		PML50BFVW	Blue
		PML50RGFVW	Red/Green

\*Test Parameters: Voltage at 24VDC and Temperature at 25°C or 77°F

Compliances and Approvals

